

BEYOND CAR AUDIO



**EXPERIENCE TRUE CAR AUDIO**

# Competitions



## Best in Europe ! Best in the world !

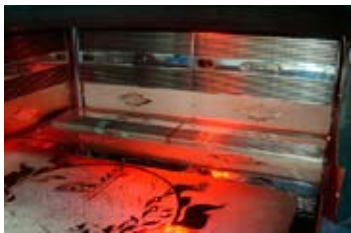


At the EMMA Car Sound Euro finals DLS cars are always very well judged. During the five last years DLS competitors has won totally 27 first prices, plus a large number of second and third prices.

We are also very successful in the US IASCA world championships. In the years 2005, 2006 and 2007 we won 9 first prices in total.

DLS is proud sponsor and member of EMMA, European Mobile Media Association who arranges Car Audio competitions and educates judges all over the world.

We are also member of IASCA who arranges Car Audio competitions in many countries around the world.



# Scandinavia



## Scandinavia speakers

### - Perfect sound...

DLS Scandinavia is a series of speakers developed for competition use but can of course be used by anyone with high demands for extremely good car sound. Most of our top ranked competitors use the Scandinavia speakers.

#### Scandinavia speaker line

Model \_\_\_\_\_ Type \_\_\_\_\_

**Scandinavia 1** - 1" dome tweeter

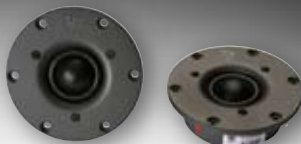
**Scandinavia 3C** - 3" midrange

**Scandinavia 6** - 6,5" mid bass for 3-way active systems

**Scandinavia 6/2** - 6,5" mid bass for 2-way active & passive systems

#### FEATURES AND BENEFITS:

- Extreme audio performance, transparent and clear sound
- Great imaging and staging capabilities
- High resolution and dynamics, rich of micro details
- Extremely wide frequency range



Scandinavia 1

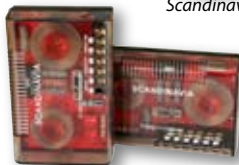


Scandinavia 3C



Scandinavia 6

Scandinavia 6/2



Gold plated screw terminals on the 6" drivers.



Aluminium die cast chassis for clean and undistorted sound.



Ribbon coils are used in the passive crossover for minimum power loss and remained sound quality.



4-position switch to adjust tweeter level.



Scandinavia 50 mm voice coils for high resolution sound.

# Ultimate



Nordica 6.2



Gothia 6.2



UP36i



UX26

## ULTIMATE speakers

### - Explore the unknown...

The **Ultimate speaker series** offers excellent performance thanks to designs, which focus on outstanding sound quality and ease of installation. Our goal with the Ultimate series was to design speakers with performance that surpassed nearly everything else"

Sound is a subjective science. If we relied on measuring instruments alone in development, we wouldn't come any further than the range of our instruments. We want to go beyond that.

Choose from 2- and 3-way speaker systems in different sizes, a coaxial set and a number of subwoofers.

**For detailed information, visit our website [dls.se](http://dls.se)**

#### Ultimate speaker line

Model	Type	Size
Nordica 6.2	2-way kit	6,5" / 1"
Nordica 10	Subwoofer	10"
Nordica 12	Subwoofer	12"
Gothia 6.2	2-way kit	6,5" / 1"
Gothia 6.3	3-way kit	6,5" / 3" / 1"
UP5i	2-way kit	5,25" / 1"
UP6i	2-way kit	6,5" / 1"
UP36i	3-way kit	6,5" / 2,5" / 1"
UX26	2-way coaxial	6,5" / 1"

# Ultimate

## ULTIMATE subwoofers

### - Simply the best...

The Ultimate Nordica subwoofers are the perfect match to the Nordica & Gothia 2- and 3-way components as well as all other speakers in the Ultimate line. These subs are designed for Sound Quality, not SPL, and the sound reproduction is very musical and controlled.

The subwoofers have a strong and robust lightweight aluminium cone with rubber surround.

Single 4 ohm voice coils with a high power handling capacity up to 500 watts. The exceptional performance of this speaker is a result of the unique **Balanced Drive Technology**. The subs come in 10 & 12" sizes and are designed for sealed enclosures 19 respective 33 litres.

*For detailed information, visit our website [dls.se](http://dls.se)*

#### The Ultimate Nordica subwoofers:

- Nordica 10 10"/ 500W RMS 4 ohm
- Nordica 12 12"/ 500W RMS 4 ohm



Nordica 12



Nordica 10



Push terminals on Nordica & Gothia drivers and subwoofers.



Aluminium die cast chassis for clean and undistorted sound on Nordica & Gothia drivers and subwoofers.



Ribbon coils are used in the passive crossover for minimum power loss and remained sound quality.



4-position switch to adjust tweeter level in the 2- and 3-way kits.



Nordica 12 installed in DLS Revolution from Finland.

# Ultimate



A2



A4



A7



TA2

## ULTIMATE amplifiers - Simply the best...

**Seven different models** made to fulfil every need.

The DLS Ultimate amplifiers are more powerful and good-sounding than most other amplifiers. Sound reproduction is extremely good, we doubt if you've ever heard a cleaner and clearer sound from a car audio amplifier. The power supply is over dimensioned and most models are 1 ohm stable.

The new TA2 tube amplifier is in a class of it's own with excellent sound qualities, a true reference amplifier.

**For detailed information, visit our website [dls.se](http://dls.se)**



### A2 - The Mid Stereo

A two-channel amplifier. Provides a power output of 2 x 85 Watts in 4 ohm stereo and 290/450 Watts in 4/2 ohm mono bridge mode. Built-in high- and low pass filters.

### A3 - The Twin Mono

A3 includes two very powerful channels. A true dual mono block with separate power sources that provides power output of 2 x 150 Watts with 4 ohm stereo and 550/870/1000 Watts with 4/2/1,33 ohm mono bridge mode. Built-in fan control as well as high- and low pass filters.

### A4 - The Big Four

Powerful 4-channel amplifier rated at 4 x 85 Watts in 4 ohm load and 4 x 145 Watts in 2 ohm. Built-in variable 50-125 Hz low-pass filters for subwoofers on all channels. Additionally, a built-in variable 20-200 Hz high pass filter to be used as a subsonic filter or high pass filter for front systems. Dual power terminals and output terminal for electronically controlled cooling fan.

### A5 - The Big Three

A three-channel amplifier rated at 2 x 85 Watts in stereo and 1 x 300 Watts in mono. In 2 ohm load it delivers 2 x 100 Watts in stereo and 1 x 500 Watts in mono. The mono channel is one ohm stable. Built-in electronically controlled fan. Remote sub level control is included.

### A6 - The Mono Amp

A one ohm stable monoblock that's perfect for the SPL competitor. Extremely powerful power supply. The output power in 1 ohm is a true 1200 RMS Watts. A cooling fan is built in but the amplifier also provides a built-in fan control for external cooling fan. Continuous phase control and remote level control included. Frequency range of amplifier 20-125 Hz. Dual power terminals where you can connect dual power feeds or a DLS Power Cap.

### A7 - The Big Five

Five-channel amplifier rated at 4x60 Watts on the stereo channels plus 1x300 Watts from the mono sub channel. You can build a complete in car entertainment system with all necessary crossovers, all in one amplifier.

For detailed information about the crossover possibilities please read the technical specifications. Remote sub level control is included.

### TA2 - The Tube Amp

Our goal was to make the best sounding car amplifier in the world. If we succeeded or not, is up to our customers to decide, but here is what the German magazine CAR & HIFI wrote in their test:

*"To describe the DLS as just good fun would be not doing it full justice. When you listen to it, you also get the feeling of owning something very special. Something that will undoubtedly keep you satisfied for a very long time. We certainly found it very hard to hand it back to its rightful owners."*



Some models have dual DC input terminals. Use for dual power cables or connection of a Power capacitor.



24 K gold plated RCA inputs of the highest quality guarantees the sound quality.



Built in high pass & low pass crossovers for flexible use.



A5, A6 & A7 includes a variable bass level and phase shift control on the sub channel. Adjust the bass sound sitting in the front seat.



Installation in a competition car from United Kingdom, built by Nigel Skingley.

# Reference



RM6.2



RS6N



R6A



R1073

## REFERENCE series

### - Rocking for you...

**We think** that you'll be surprised with the musical subtleties - subtleties that you were unable to hear before you installed our exclusive Reference series speakers.

Rich and powerful bass sound combined with crystal-clear treble and mid-range sound which really makes your hair to rise all over your body.

#### Reference speaker line

Model	Type	Size
R4	2-way kit	4" / 20 mm
R5A	2-way kit	5,25" / 25 mm
R6A	2-way kit	6,5" / 25 mm
RS5N	2-way kit	6,5" / 25 mm
RS6N	2-way kit	6,5" / 25 mm
MS5A	2-way kit	5,25" / 28 mm
RM6.2	2-way kit	6,5" / 25 mm
Reference 6.3	3-way kit	6,5"/2,5"/20 mm
R1073	3-way coaxial	7 x 10"

# Reference



## REFERENCE series

### - Feel the bass....

With our woofers, you get a sound experience with an extra dimension, a dimension you can feel all the way to your spine.

The Reference subwoofers include 5 models, from 6,5" up to 12". RW10i & 12i subwoofers are made for use in sealed enclosures only. RW10i in 20 litres (0,7 cuft) and RW12i in 30 litres (1,06 cu ft).

RMW10 and 12 have a metal cone, a so called one-cone body. Produces a hard and tight bass sound with depth even in small enclosures. They are both made for use in vented enclosures.

The RW6 subwoofer kit comes with two 6,5" drivers, a 3" bass port and instructions for building the perfect enclosure.

#### Reference series subwoofers

Model	Size / Power / Imp.
RW6	6,5" / 200 W 2 ohm
RW10i	10" / 500 W 2 ohm
RW12i	12" / 500 W 2 ohm
RMW10	10" / 500 W 4 ohm
RMW12	12" / 500 W 4 ohm



Push terminals on subwoofers for minimum power loss and secure connection



RM6.2 has a double cone suspension creating deep mid bass.



Passive crossovers with only high class components like air coils and MXP polypropylene capacitors.



RM6.2 has a 3 ohm voice coil for increased amplifier output. Aluminium voice coil former for high power handling.



Gold plated terminals

# Reference



## REFERENCE series

### - A pleasant sound...

**These amplifiers** have a warm and detailed sound making it possible to listen for many hours without tiring your ears.

The Reference amplifiers are 2 ohm stable, able to deliver the highest power peaks without distortion or dynamic loss. In the European Car sound finals in the last years, several of the prize winning DLS cars used these excellent amplifiers.

#### **High Input**

The high input is used for factory installed car stereo head units without RCA pre-outs.

Connect directly to the rear speakers. Automatic turn on when using high level input. You do not have to use the remote wire connection. If you prefer, you can use a remote wire together with high level input.

This feature comes with all amplifier models in this series.



RA40

# Reference



## REFERENCE RA10

The Reference RA10 is a mono amplifier with a nominal output of 300 Watts in four ohm. It is 1 ohm stable and can put out up to 820 Watts using a one ohm load. Built-in low-pass filter for subwoofers, variable between 40 and 125 Hz. Bass boost and phase shift control.

## REFERENCE RA20

The Reference RA20 with a nominal output of 2 x 130 Watts. With a mono bridge-connection, it puts out all of 440 Watts. Built-in low-pass filter for subwoofers, variable between 40 and 125 Hz. Bass boost and phase shift control.

## REFERENCE RA25

The Reference RA25 with a nominal output of 2 x 70 Watts. This amplifier is mainly designed for use to a front system. Built-in high-pass filter variable between 20 and 125 Hz.

## REFERENCE RA30

The Reference RA30 is a powerful 3-channel amplifier with a nominal output of 2 x 70 Watts plus 1 x 265 Watts. Built-in low- and high-pass filters. Bass boost 0-18 dB. Phase shift control and high level input with automatic start. A remote bass level and phase shift control is included.

## REFERENCE RA40

The Reference RA40 is a powerful amplifier with a nominal output of 4 x 75 Watts. With a mono bridge-connection, it puts out all of 2 x 220 Watts. Switch-able low- and high-pass filters are incorporated. Bass boost 0-18 dB. Phase shift control.

## REFERENCE RA50

The Reference RA50 is a 5-channel amplifier with a nominal output of 4 x 70 Watts plus 1 x 265 Watts. Built-in low- and high-pass filters. Bass boost 0-18 dB. Phase shift control and high level input with automatic start. A remote bass level and phase shift control is included. The internal filters can be used for active crossover to a 2-way component set, or to a mid bass speaker.



Hi quality DC input terminals in 24 K gold plated brass for minimum voltage drop.



24 K gold plated RCA inputs of the highest quality guarantee the sound quality.



Built in high pass & low pass crossovers for flexible use.



RA10, RA30 & RA50 includes a variable bass level and phase shift control on the sub channel.



End covers and connecting links for a Hi-End installation



## Performance speakers

### - Let the party begin...

It's a mystery to many that the Performance series can give such a spacious sound despite their down to earth price.

The reality is that good design and space age materials can yield performance way beyond what you might expect.

You will find all kinds of speakers. Coaxial speakers from 4" to 8", different 2- or 3-way component kits, plus a wide range of 6 x 9" speakers. Subwoofers in 8", 10", and 12" sizes and different active and passive subwoofer boxes complete the Performance line.

#### Performance components

Model	Type	Size
K4	2-way kit	4" / 13 mm
K5	2-way kit	5,25" / 13 mm
K6	2-way kit	6,5" / 13 mm
B5A	2-way kit	5,25" / 16 mm
B6A	2-way kit	6,5" / 16 mm
C4	2-way kit	6,5" / 20 mm
C5A	2-way kit	6,5" / 20 mm
C6A	2-way kit	5,25" / 20 mm
C36	3-way kit	6,5" / 4" / 20 mm

#### Performance coaxials

Model	Size
124, 125, 126	4" / 5,25" / 6,5" 2-way
1269	6x9" 2-way
224, 225, 226	4" / 5,25" / 6,5" 2-way
269	6x9" 3-way
425, 425, 426	4" / 5,25" / 6,5" 2-way
428	8" 2-way
960	6x9" 3-way
962	6x9" 2-way



# Performance

## Performance subwoofers

### - Feel the rythm...

Three different types of subwoofers are included in the Performance series.

W308B, W310D and W312D are good sounding subs with cone of non-pressed carbon fibre reinforced paper and cone suspension of butyl rubber. They create a good sound in most enclosure types.

The OA8, OA10D and OA12D have dual magnet systems, stable baskets and dual spiders to handle the heavy-duty demands that are inherent when installing a woofer without a box. They also work well in enclosures if you prefer that.

The KW10 & 12 subwoofers are designed for use in sealed enclosures. In a well built enclosure they create a bass sound that can be compared even with more expensive subs.

#### Performance series subwoofers

Model	Size / Power / Imp.
KW10	10" / 200 W 4 ohm
KW12	12" / 250W 4 ohm
OA8	8" / 180 W 8 ohm
OA10D	10" / 180 W 4 ohm
OA12D	12" / 210 W 4 ohm
W308B	8" / 100 W 4 ohm
W310D	10" / 120 W 4 ohm
W312D	12" / 150 W 4 ohm



W312D



KW12



OA10D



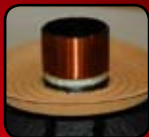
Push terminals on most of the subwoofers in the series.



DLS EFR technology extends the frequency range of the mid bass driver in our component kits.



Crossovers are using only good components and are individually designed for each speaker model.



High power voice coils on aluminium former.



Gold plated speaker terminals

# Performance



## Performance amps

### - dB Warning...

**Performance amplifiers**, made for the broad public that wants to improve the car sound in any installation.

They can be used together with most factory installed car stereo equipment thanks to the advanced high level input circuitry. They are good sounding with features that are sufficient for the normal user. A modern slim design makes them fit into most cars.

The Performance amplifiers are able to deliver the highest power peaks without distortion or dynamic loss, equipped with powerful bipolar transistors.



CAD15



CA41



CAD11



### CAD11- 1 kW MONO BLOCK

The CAD 11 is a digital mono amplifier made for subwoofer use. It delivers a nominal output of 400 Watts in 4 ohm, 750 Watts in 2 ohm and 1050 Watts in 1 ohm speaker load. Low-pass and subsonic filters are built-in. Two CAD11 can be connected in bridge mode with an output power of 2 kilowatt.

### CAD15 -1,6 kW MONO BLOCK

The CAD15 has the same features as CAD11 but with a higher power output. It delivers a nominal 550 Watts in 4 ohm, 900 Watts in 2 ohm and 1600 Watts in 1 ohm speaker load. Two CAD15 connected in bridge mode gives up to 3,2 kilowatt output power.

### CA 22 - TWO CHANNELS

The CA 22 is a small but powerful amplifier with a nominal output of 2 x 60 Watts. In mono bridge-connection, it puts out all of 200 Watts.

### CA 23 - TWO CHANNELS

The CA 23 with a nominal output of 2 x 135 Watts. In mono bridge-connection, it puts out all of 400 Watts. Built-in low pass filter for subwoofers, variable between 50 and 500 Hz.

### CA 31 - THREE CHANNELS

The CA 31 is a three channel amplifier with a nominal output of 2 x 65 Watts + 1 x 170 Watts in 4 ohm load (2 x 90 W + 1 x 280 W in 2 ohm).

### CAT 31 - 24 VOLT TRUCK AMPLIFIER

The CAT 31 is a three channel amplifier similar to CA31 but made for 24 Volt use in trucks and busses. Gives a nominal output of 2 x 90 Watts + 1 x 170 Watts in 4 ohm load.

### CA 41 - FOUR CHANNELS

The CA 41 is a powerful amplifier with a nominal output of 4 x 70 Watts. With a mono bridge connection, it puts out all of 2x200 Watts. Built-in low and high pass filters. Bass boost 25 Hz - 80 Hz, 0-18 dB.

### CA 51 - FIVE CHANNELS

The CA 51 is an amplifier suitable for in-car entertainment systems. Nominal output of 4 x 50 Watts + 1 x 170 Watts on a mono sub channel. Variable phase control, 0-180 degrees, on sub channel.

### CA 12 - 500 W MONO BLOCK

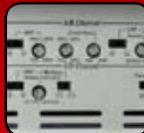
The CA 12 is a mono amplifier with a nominal output of up to 500 Watts in 1 ohm load. Variable low pass and subsonic filters for subwoofers are built-in.



Hi level input with automatic turn on can be connected to all amplifier models in this series.



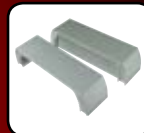
CAD11 and CAD15 mono amplifiers have a powerful gold plated power terminal



Built in high pass & low pass crossovers for flexible use. Some models also include Bass boost.



CAD11, CAD15 & includes a remote variable bass level control.



End covers and connecting links for a Hi-End installation.

# Accessories



Complete installation kits for easier installation.

## DLS accessories

### - For perfect result...

Good sounding speakers and amplifiers need to be connected to each other. The whole installation must be made with high quality cables, connectors and other accessories to give a good final result. With accessories from DLS you can be sure to get the best. Here we show a small part of our accessories, visit [www.dls.se](http://www.dls.se) to find the full range.



#### POWER CABLE

For professional installations. Soft and flexible oxygen free cable (OFC) of pure copper



#### SPEAKER CABLE SC-TYPE

Low inductance, OFC multipurpose cable for all installations.



#### SPEAKER CABLE DLS SCP

Flat type low loss speaker cable reduces the inductance to a minimum.



#### DLS HQS

OFC loudspeaker cable for demanding audiophile users.



#### SIGNAL LINE CABLE LC2 PRO

Triple shielded stereo cable without remote. LC3 ULTIMATE Balanced mono cable with two inner wires and shield.



#### LINE CABLE

Shielded signal line cable for standard car audio installations. With remote wire and gold plated connectors.



#### PRO - LINE CABLE

Quasi-balanced triple shielded top quality signal line cable. Reduces all kinds of interference and noise from the car.



#### HQL LINE CABLE

HQL- an inter-connect cable made for high class analogue applications. PE foam insulation for low capacitance.



#### RCA CONNECTORS PRO & ULTIMATE

RCA-male or female in metal with teflon insulation. Highest quality.



#### RCA ANGLED CONNECTORS

RCA angled connectors, RCA-female to male. Two types.

# Accessories



### POWER CAPS 1 FARAD

Improve the bass with a DLS capacitor. The Power Cap quickly supplies the amplifier with the extra current it needs.



### CONICAL PORTS

DLS bass port kits for vented enclosures reduces the port noise at low frequencies. The air passes more easily through a conical port opening.



### BATTERY TERMINALS

Several different models for all needs



### RING TERMINALS RT-SERIES

5 different ring terminals in 2- or 4-pack.



### DLS FORK ADAPTORS - CRIMP TYPE

For easier cable connections to amplifier terminals.



### POWER BLOCK PB1, PBT2

Power blocks without fuse holder.



### FUSE BLOCKS

Gold plated fuse blocks for AGU-fuses. 2, 3 or 4 fuses



### FUSE HOLDERS

For AGU glass fuses. 5 - 80 A or ANL fuses 60 - 300A



### SPEAKER BOX TERMINALS

SBC02 - round type  
SBC-04 - square type



### TRUNKLINER

Suitable for speaker boxes, rear shelves or as interior mat in any car. A superb mat with good stretching qualities



### SPEAKER CLOTH

Thin and elastic sound transparent speaker cloth for speaker baffles. Size 90 x 120 cm (35" x 47")



### SPRAY GLUE

High quality contact adhesive for felt cloth and imitation leather, 500 ml

# Marine Audio



## DLS Marine Audio

We have experienced a demand for good sounding high quality speakers and amplifiers for use in all kind of vessels. The Swedish boat builder Nimbus Boats is one of our customers using DLS Marine Audio in several boat models. For the full range of marine audio look at our website [www.dls.se](http://www.dls.se)



MRA31



MR12D



MR6



MBS

# Home Audio



**"M" AS IN MUSIC!** The M-series are DLS most advanced high end speakers. They're built for stability and dynamics, down to the smallest micro detail. The drivers use a very advanced magnetic system and aluminium diaphragms damped by an innovative dust cap, combined with low weight aluminium voice coils and a cast basket.

**THE EXCEPTIONAL PERFORMANCE** of R-series speakers is a result of advanced speaker-design skills and unique driver technology. The low-mid unit has a lightweight cone made of non-compress paper, which provides a natural bass and a very clear and detailed midrange. It meets the 28 mm dome tweeter well and presents an uncoloured high midrange and a distinct high-end performance.

**D-SERIES - CREATED FOR THOSE WHO LOVE** both music and movies. Their slim shape and modern design fits them nicely in almost any living room. Preferably beside a nice, flat, wall-TV. Flexible systems with fully integrated sound characteristics, allowing you to choose exactly the speaker size to suit you. It won't matter if you have the latest 7.1 home cinema or simply your favourite listening armchair set aside in the corner for lazy afternoons with your record collection for company.

**DLS IN-WALL & ON-WALL SPEAKERS** are easy to install and you'll get excellent DLS sound wherever you want. Install a pair on each side of your 42" flat screen, or as satellites behind you. Or let them provide a pleasant sound background in your kitchen or bathroom. You won't be disappointed!

The speakers can also be used for sound in public places, such as in a supermarket or your office. The complete range of Home Audio products can be found at [www.dls.se](http://www.dls.se).

*On-wall speakers    In-wall / In-ceiling speakers*



From our headquarters in Gothenburg, we export speakers, amplifiers and accessories to mobile hifi enthusiasts all over the world. We can also offer you home entertainment speaker systems as well as On-wall and In-wall speakers. For more detailed product information, or information about nearest retailer, please enter our website [www.dls.se](http://www.dls.se).

